

- 1 **AGNES SO**
BALCONY ENDURANCE
CBD
- 2 **SHAE ROOKE**
PARADISE
FITZROY
- 3 **EMILY BOYLE**
OVERLAY
SOMEWHERE IN FITZROY
- 4 **KATHY HOLOWKO**
BIG LITTLE THINGS
A GARDEN IN COLLINGWOOD
- 5 **AMY ALEXANDER AND ADAM MCCLAIN**
THE PRE-CINEMA GARDEN
ABBOTSFORD
- 6 **ALICIA BRYSON-HAYNES**
BALLOON STALL
DENNIS TRAIN STATION
- 7 **LIZZY SAMPSON**
FOUND OBJECT
NATURE STRIP NORTHGATE
- 8 **CLAIRE ROBERTSON**
EMOTIONAL LANDSCAPE SERIES (PART 1)
ALPHINGTON
- 9 **HAYLEY SCILINI**
TRANSFORMER
COBURG
- 10 **TUL SUWANNAKIT**
THIS SEAT'S TAKEN
THE EDINBURGH CASTLE, BRUNSWICK



ART IN REAL LIFE BUS TOUR

Welcome to 'Art in real life: An exhibition in many places'.

You are experiencing a one-night only pop up event – a fanciful trail, a bus ride with performance, an expedition to the homes and neighbourhoods of the creative.

The artists involved have located their ideas within the boundaries of their neighbourhood, and present the creative act of making, often intertwined within their everyday.

Coalesce have gone festive – based on the tradition of the Christmas lights tour, this is a travelling exhibition of a different kind, an initiative to open up the possibilities of locating art outside of the gallery – take your seat and enjoy the ride!

WWW.COALESCEARI.WEEBLY.COM



AN EXHIBITION
IN MANY PLACES

ARTISTS



AGNES SO
BALCONY ENDURANCE
CBD

Agnes So will present a performance from the balcony of her inner city apartment. By staging body, site and the everyday object in a test against gravity, the artist will be found holding an item over the third floor ledge. The performance will end when the artist fails to sustain the object. Viewers are invited to observe the performance from the alleyway, but in doing so, agree to submit their own body to the danger of a falling object.

msagnes.so@gmail.com
www.agnes.so



SHAE ROOKE
PARADISE
FITZROY

Paradise explores layers of perception with reference to landscape, environment and colonialism. Through the juxtaposition of found objects and a video projection, multiple perspectives of landscape are revealed through a moving shadow play. Originally conceived as an immersive installation, the dystopic world of Paradise will be viewed through peep-holes in the barred windows of an inner city dwelling for 'Art in Real Life'.

shae.rooke@gmail.com
www.shae.rooke.com



EMILY BOYLE
OVERLAY
SOMEWHERE IN FITZROY

Through a print-based practice, Emily Boyle explores notions of memory, perception and belonging through the vehicle of the suburban landscape. Common architectural forms are used as the entry point into an investigation of the histories and values that become associated with, and embodied by ordinary suburban buildings. For 'Art in Real Life', Boyle will present a group of works on paper that directly contrast the real with the transient, hinting at the interaction between mind, memory and site.

emilyrboyle@hotmail.com



KATHY HOLOWKO
BIG LITTLE THINGS
A GARDEN IN COLLINGWOOD

Kathy Holowko welcomes you into her garden to share some of her observations and wonder for the natural world. Share her admiration for seeds, and empathy for the often invisible creatures that inhabit the garden. Through display and adjustments of scale, Holowko reveals some big little things.

kathyholowko@gmail.com
kathyholowko.blogspot.com



AMY ALEXANDER AND ADAM MCCLAIN
THE PRE-CINEMA GARDEN
ABBOTSFORD

The Pre-Cinema Program creates clandestine little spaces using all recycled, re-appropriated and found materials. These 'zoetropes' rely upon audience interactivity to create a rapid succession of images producing the illusion of motion, the equivalent of animated life. Plants and paper vines intertwine through pre-cinema devices, providing a contrast between the tin and cobblestones within the quirky space of our urban garden, showing glimpses into a lush and full bloom world.

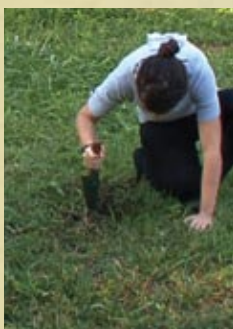
precinemaproject@gmail.com
www.precinemaprogram.com



ALİÇA BRYSON-HAYNES
BALLOON STALL
DENNIS TRAIN STATION

Balloon Stall is a temporary installation created within the tunnel that runs beneath Dennis Train Station. The installation can be seen when passing through the tunnel and peeping through the metal grid when standing on the platform above. Duration and shifting of light activates the work. The balloons oscillate between translucent and solid by the passing of day and night and over time from full to empty. The work interrupts the daily commute, creating a confounding moment for the viewer to stall and wonder.

alicabh@gmail.com
www.briannaalica.com



LIZZY SAMPSON
FOUND OBJECT
NATURE STRIP, NORTHCOTE

Lizzy's installation plays on the notion of the 'found object' in its most literal sense. Through subtle repositioning, the viewer is confronted with a series of decisions; ethical, moral and personal. Rather than re-circulating the object on its intended route, the new context extends and expands its possibilities, 'value-adding' by introducing a range of personal experiences. Lizzy's work aims to question or subvert the social structures we accept and live by as best practice in Australia and the West.

lizzysampson@gmail.com
www.lizzysampsonart.weebly.com



CLAIRE ROBERTSON
EMOTIONAL LANDSCAPE SERIES
(PART 1)
ALPHINGTON

Robertson's practice takes the form of a complex, often uncanny, dialogue between artist, camera, and the spaces that they inhabit. She explores notions of the psychological dimensions of built spaces, using architectural facades or structural interiors as a metaphor for representing the mind as a kind of space that also has walls. For 'Art in Real Life: An exhibition in Many Places' Robertson will display Emotional Landscape Series (Part 1), a one channel video installation that explores the subjective nature of memory and how it occupies space.

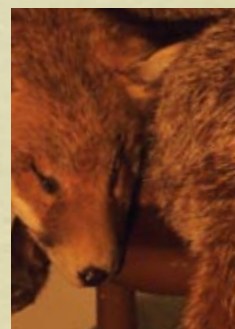
clairerobertson.art@gmail.com
www.clairerobertson-art.tumblr.com
www.vimeo.com/user3222436



HAYLEY SCILINI
TRANSFORMER
COBURG

Hayley Scilini's practice centres around ideas of energy, movement and spatial ambiguity expressed primarily through colour. Using the language of geometric abstraction, she creates paintings and large-scale painting installations that are immersive and dynamic. 'Transformer', presented for the art bus tour is a shift into animated projections, translating her geometric shapes into morphing and pulsating coloured forms. The video will be projected from the artist's 5th storey apartment window allowing it to be seen from the footpath below and surrounding streets.

hayleyscilini@gmail.com
www.hayleyscilini.com.au



TUL SUWANNAKIT
THIS SEAT'S TAKEN
THE EDINBURGH CASTLE, BRUNSWICK

This Seat's Taken explores themes of displacement, alienation and adaptation through the opportunistic presence of the feral fox within human domestic environment. The work sets up an unexpected encountering between human and wild animal in an unlikely scenario that results in timing of the viewing experience, surprise and humour. Through the constant twist between reality and fiction, the staged narrative leads us to essentially question the meaning of mutual tolerance, acceptance and existence.

s-tul@hotmail.com



MISS ELLANEOUS

Our esteemed MC Miss Ellaneous will guide you through the journey of 'Art in Real Life: An exhibition in many places'. Usually performing as a juggler, hula hooper and old fashioned diva, tonight Miss Ellaneous will entertain, delight and excite with her unique view of 'Art in Real Life'.

www.missellaneous.com.au
info@missellaneous.com.au