



# ART IN REAL LIFE BUS TOUR

Welcome to Coalesces' second annual Art Bus tour! We are excited that you have joined us for Art in real life: An exhibition in many places.

As we meander the streets of Melbourne together on a trail of art in homes, front yards, car parks and mailboxes, you will be entertained distracted and delighted by MC Miss Ellaneous.

The artists involved in the tour have located their ideas within the boundaries of their home, and present the creative act of making, which is often intertwined within their everyday. This is a traveling exhibition of a different kind, a series of temporary artist-run spaces, an initiative to open up the possibilities of locating art amongst the masses—take your seat and enjoy the ride!

[WWW.COALESCEARTI.WEBBLY.COM](http://WWW.COALESCEARTI.WEBBLY.COM)



Wednesday December 12 2012

# ARTISTS

## RIA GREEN WRAPPED HOME > BRUNSWICK



Wrapped Home looks at how interventions in space using simple materials and methods can alter a person's experience completely.

Inspired by Christo and Jeanne-Claude's Wrapped Reichstag, Berlin, 1971-95, this project investigates the transformation of objects and space that occurs when unexpected materials are introduced.

[ria.m.green@gmail.com](mailto:ria.m.green@gmail.com)  
<http://missriagreen.tumblr.com>

## MAKE+SHIFT+PROJECTS KANDY KASTLE > EAST BRUNSWICK



make+shifts+projects presents Kandy Kastle, an interactive wall work where the audience is invited to eat, lick, suck, munch and chew an edible mandala of abstracted shapes that will be completely made of candy. make+shift+projects collective creates collaborative projects that explore the transformation of space. This collaboration by Adriane Hayward and Grayden Shelley invite you to devour the art.

[www.makeshiftprojects.com](http://www.makeshiftprojects.com)

## LISA FRANKLAND BUS - THE SEQUEL > NORTHCOTE



Lisa Frankland has been showing her installation based work since 2007. In 2011 she was a finalist in both the aREcycle and Substation Contemporary Art prize. In 2012 she began an M.F.A at RMIT University which has proven to put the turvey in her topsey.

[carobota@yahoo.com](mailto:carobota@yahoo.com)  
<http://lisafrankland.blogspot.com.au>

## PSST TAKE POPOP COLLABORATION > CLIFTON HILL



Artists are manufacturers in a laboratory of the collective unconscious — mixing up streams of being to create a realm of associative feeling. We alter our physical environment with our personal mental imagery, however once made public this becomes a shared virtual map outlining the boundaries between secrecy and exposure. It is somewhere that blends fiction and fact, the familiar with the foreign; a sensory and spatially immersive experience combining digital imagery, sound and environment.

## ROB GRAHAM GHOST: POD > EAST BRUNSWICK



The Pod uses time and memory to let the viewer/user/artist see the past and inform the future. The work records people and generates audio and video through interaction.

Ghost pod helps us become aware of our place in the hyper world. As we become more reliant on digital memory and communication we have the opportunity to fall into the blend and explore the digital void.

[robspinfx@gmail.com](mailto:robspinfx@gmail.com)

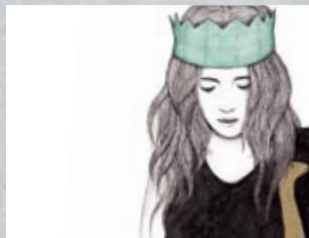
## SAMANTHA HERIZ LESS ADD ABOUT SOMETHING > BRUNSWICK



Samantha Heriz utilises somatic movement and the craft of performance as the basis for creating her work. A broad practice incorporating performance, painting, object making, instructional and participatory art, Heriz asks the viewer to become involved in subtlety and novel experience.

[samanthaheriz@gmail.com](mailto:samanthaheriz@gmail.com)  
[www.scorestolifeto.wordpress.com](http://www.scorestolifeto.wordpress.com)

## I & THE OTHERS PAPER CROWN > BRUNSWICK



I & The Others' creative practice is an eclectic meld of visual art, illustration, street art & graphic design. Her work is inspired by culturally diverse cities, weatherbeaten surfaces, & popular culture.

Immersing herself in the street art scene in Melbourne since 2010 has motivated her to curate and co-curate a number of exhibitions and street art based events both in Australia and internationally.

[kirrilly@iandtheothers.com](mailto:kirrilly@iandtheothers.com)  
[www.iandtheothers.com](http://www.iandtheothers.com)

## CLAIRE ROBERTSON & AGNES SO UNTITLED (AUDREY'S DANCE) > THORNBURY



For Art in Real Life, artists Claire Robertson and Agnes So will present a collaborative work that highlights the idiosyncratic movements of characters featured in David Lynch's series Twin Peaks.

By isolating these movements and re-performing them in an abstracted stage set, Robertson and So pay homage to Lynch's use of absurd gesture as a means by which to unsettle a viewer and reveal a character's true psychological state.

[helloagnesso@gmail.com](mailto:helloagnesso@gmail.com) / [www.agnes.so](http://www.agnes.so)  
[clairerobertson.art@gmail.com](mailto:clairerobertson.art@gmail.com)  
[www.clairerobertson-art.tumblr.com](http://www.clairerobertson-art.tumblr.com)

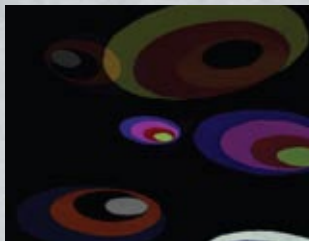
## ALIÇA BRYSON HAYNES BLACK SQUARE > IVANHOE



Aliça's site responsive installations are an expanded form of 'painting'. Materials such as paint, glitter, gold leaf, fruit, crystals and balloons are used to construct the work, which is situated both within a gallery context and the public domain. The 'known' qualities of these materials are altered through their unexpected placement, modification and repetition to elicit a sense of 'wonder' and surprise.

[alicabh@gmail.com](mailto:alicabh@gmail.com)  
[www.alicabrysonhaynes.com](http://www.alicabrysonhaynes.com)

## TREWLEA PETERS GARDEN PATCH > NORTHCOTE



Garden Patch is a video installation that fuses traditional stop motion animation with computer-generated particles to give the illusion that the colourful felt patches have come to life in the garden. Trewlea's intent was to reinvent the stylistic approach of abstract animator Oskar Fischinger using hand cut geometric felt shapes. Fischinger's animation Radio Dynamics (1942) possesses the same energy and vibrancy that is replicated in the Garden Patch.

[trewlea.peters@rmit.edu.au](mailto:trewlea.peters@rmit.edu.au)

## MC

Our esteemed MC Miss Ellaneous will guide you through the journey of 'Art in real life: an exhibition in many places'.

Known around town for her skills in juggling, hula and being an old fashioned Diva; tonight Miss Ellaneous will tantalize your creative juices with her unique view of 'Art in Real Life'. Be prepared to be delighted, enticed and excited!

[info@missellaneous.com.au](mailto:info@missellaneous.com.au)  
[www.missellaneous.com.au](http://www.missellaneous.com.au)